



Our purpose is people

# 2023 HCM TOOLS EVERY PAYROLL PROFESSIONAL SHOULD HAVE

Tiffany Baker: Sales Leader & Veteran Employer Advisor

Mindy Childers: Solution Expert ~ Strategic Market

# Wheel....of....JEOPARDY!!!!



+



=

A chance to win some of our fabulous prizes!!!! (and our thanks for playing prizes)



# TECHNOLOGY



COMPUTERS ENTERED WORKFORCE IN 1980-1986



# TECHNOLOGY advancements

- Automatic pay adjustments
  - RETRO PAY, MID-CYCLE PAY CHANGES/TERMINATIONS
- Approval Process & Workflows
- Integrated Payroll/HRIS
- Mobile Visibility for EVERYONE

# Scenarios for \$200 (actually just a spin)

This is a tool for employees to play out if/then pay scenarios...



# Payroll's Never Wrong for....another spin

This notification explains a change on an employees upcoming paycheck that impacts their gross-net...

**STATEMENT OF EARNINGS AND DEDUCTIONS**  
RETAIN THIS FOR YOUR RECORDS. CONTACT YOUR DEPARTMENT  
IF YOU HAVE ANY QUESTIONS ABOUT YOUR TOTAL EARNINGS

**Employee Name:** JOHN QUINCY PUBLIC      **Social Security No.** 123-45-6789      **Check Date** 10/25/10

**Tax Status:** MARRIED-03      **Check No:** 123456      **Dist Cd:** 000

**Total Gross Earnings** → 1,618.87      **Net Pay** → 1,223.41      **Pay Period Ending** → 10/15/10

EARNINGS				REDUCTIONS AND DEDUCTIONS		YEAR TO DATE	
Description	Month	Hours	Gross Pay	Description	Amount	Description	Amount
REG PAY	101	88.00	1,618.87	TIAA CREF	139.42	YTD GROSS	22,202.16
				UNIFORM HLTH	18.00	FIT GROSS	20,466.99
				TOTAL RED	157.42	FED INC TX	1,796.37
				OASI 6.20%	100.06	OASI GROSS	22,132.16
				F INCOME TAX	97.17	OASI TAX	1,372.19
				MEDICAL AID	4.72	MED GROSS	22,132.16
				TIAA LTD	9.55	MED TAX	320.92
				SEBB LIFE B1	0.33		
				LIFE B2 SMOKE	2.68		
				MEDICARE1.45%	23.40		
				TOTAL DED	237.91		

THE NEXT PAYDAY IS WEDNESDAY, NOVEMBER 10, 2010.

CONTRIBUTIONS MADE ON YOUR BEHALF	
Contribution Description	Amount
MEDICARE1.45%	23.40
TIAA-CREF	121.42
OASI 6.20%	100.06
MEDICAL AID	10.42
HCA	850.00
TOTAL CONT	737.68

Where's My \$2 for....yet another spin

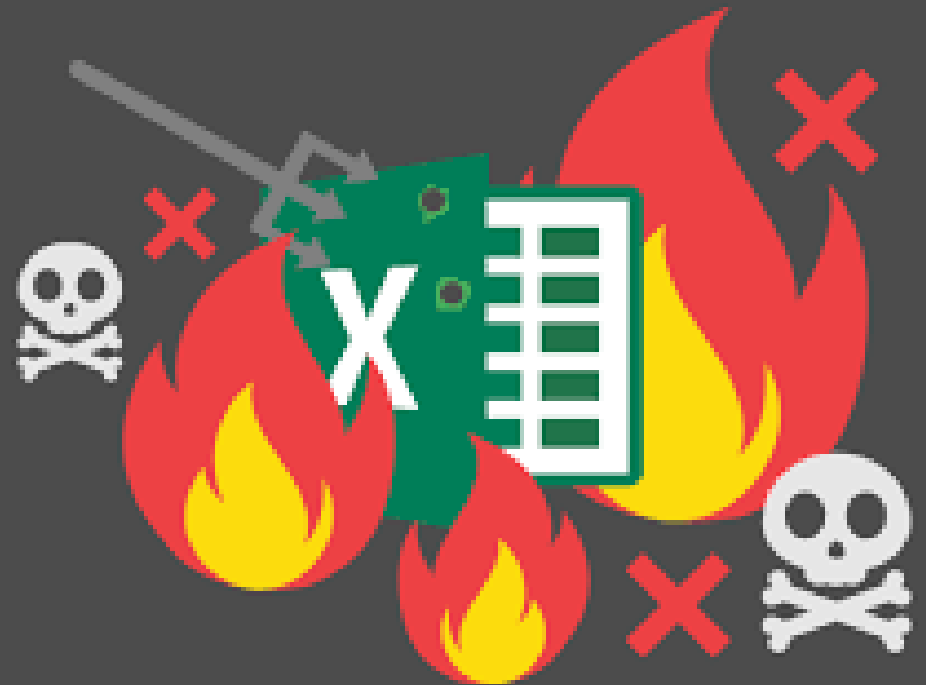
This IT-ish tool removes the hair-on-fire Friday emails/calls/texts/walk-ins about Payroll questions...





# Spreadsheet Olympics for...#spinning

Payroll dreads when raises & bonuses roll around unless they have this tool....



# Hunt You Down for...a spin

Nobody can set off Payroll like a rocket, except managers who forget to do this....



# Good Deeds....yup... another spin

Good for the soul, this tool allows employees to give more without giving more work to Payroll.



Locals for ... you guessed it...another spin

The most painstaking part of HR & Payroll's day, yet usually a joyous activity for employees...



Take me back for...another awesome spin

Everyone loves a good math problem, but when manual, they are unnecessary like a shoe umbrella.



# Who's on First for...our almost last spin

This report should always be the rule, not the \_\_\_\_\_ when spotting payroll changes quickly.



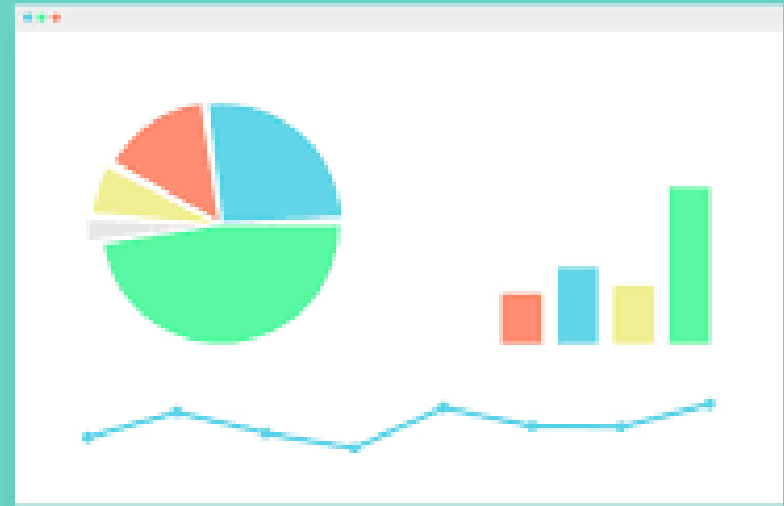
# What changed? for...yep...a spin

No one likes to play spot the difference unless we're on our phones. This report gives you all the answers.



# Total It Up....another spin

The culmination of all things pay, tax & benefits results in this feel-good document...





Step off on the right foot for...another spin

We all know pay & tax starts here...



The state that should be its own country for...one more spin

The state everyone loves to calculate manual overtime for....



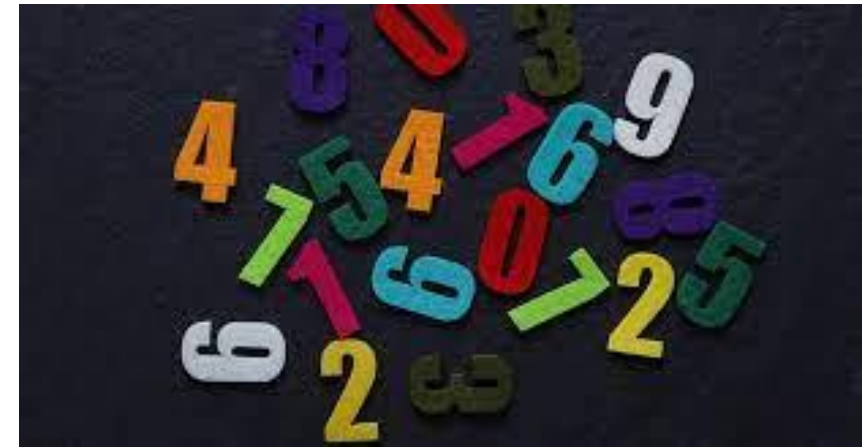
SHOW ME THE MONEY!!!!

After Payroll, EVERY CFO wants this  
from Payroll....



Give it to me straight...

**Crunching those numbers  
for the CFO has never been  
so easy with this....**



The UKG logo consists of the letters 'UKG' in a white, sans-serif font. The letter 'U' is stylized with two small teal dots above it, one on the left and one on the right.

UKG

Our purpose is people

The word 'Questions?' is written in a large, teal, cursive script. The letters are thick and fluid, with a question mark at the end. The background is a blurred office scene with people working at desks with laptops. A solid teal wave shape is at the bottom of the page.

Questions?